

Human

3D printed technopolymer, metal stratified

Light fixture description

Human is a concept and unique fixture, manufactured in order to show the AggioLight capability to craft make exclusive and complex 3D shapes. The object is created through 3D printing, generating a technopolymer shape. After a metal stratification process, the fixture turns into a metal shape and can be enriched by any kind of galvanic finishing.

Lighting fixture description

Reference code	C2oAL-0006-Do2Roo
Degree of protection IP/IK	IP20
Mounting type	wall lamp
Color / finish	Opaline blown glass. Gold plated stratified metal finish on 3D printed technopolymer
Physical dimensions	h. 390 mm x p. 220 mm x l. 150 mm - 1.2 kg h. 15.4" x p. 8.7" x l. 5.9" - 2.6 lb
Plug	wall bracket and wall plug LNT
Notes	available in different finishing, as per table at page 3.



Light source

Wattage	1 x G9 max 33W - LED 3.5W recommended
Lumen	350lm recommended
Color Temperature (K)	2700°K recommended
Voltage	220-240V or 100-120V

Control gear / Ballast / Transformer

Manufacturer	-
Type	-
Reference	-
Voltage / frequency	-
Wattage	-
Dimming / addressable	Phase cut dimmable bulb recommended
Other	-

Human

3D printed technopolymer, metal stratified



AGGIOLIGHT

Finish examples



Copper



Rose Gold



Gold

Human

3D printed technopolymer, metal stratified



AGGIOLIGHT

Finish examples



Nickel



Chrome

Human

3D printed technopolymer, metal stratified

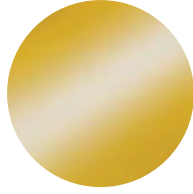
Metal finish options



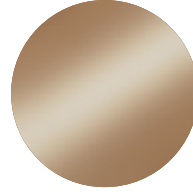
ANTIQUÉ BRONZE
Available: • Glossy • Matt



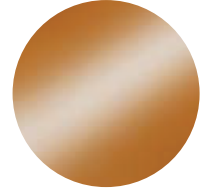
ANTIQUÉ BRASS
Available: • Glossy • Matt



GOLD 24KT PLATED
Available: • Polished • Satin



ROSE GOLD PLATED
Available: • Polished • Satin



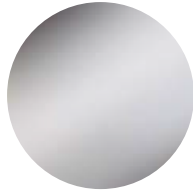
COPPER
Available: • Polished • Satin



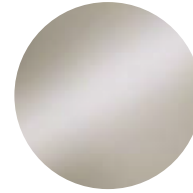
BRASS
Available: • Polished • Satin



BLACK NICKEL PLATED
Available: • Polished • Satin



CHROME PLATED
Available: • Polished • Satin



NICKEL PLATED
Available: • Polished • Satin



STAINLESS STEEL
Available: • Polished • Satin